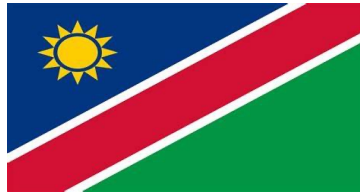
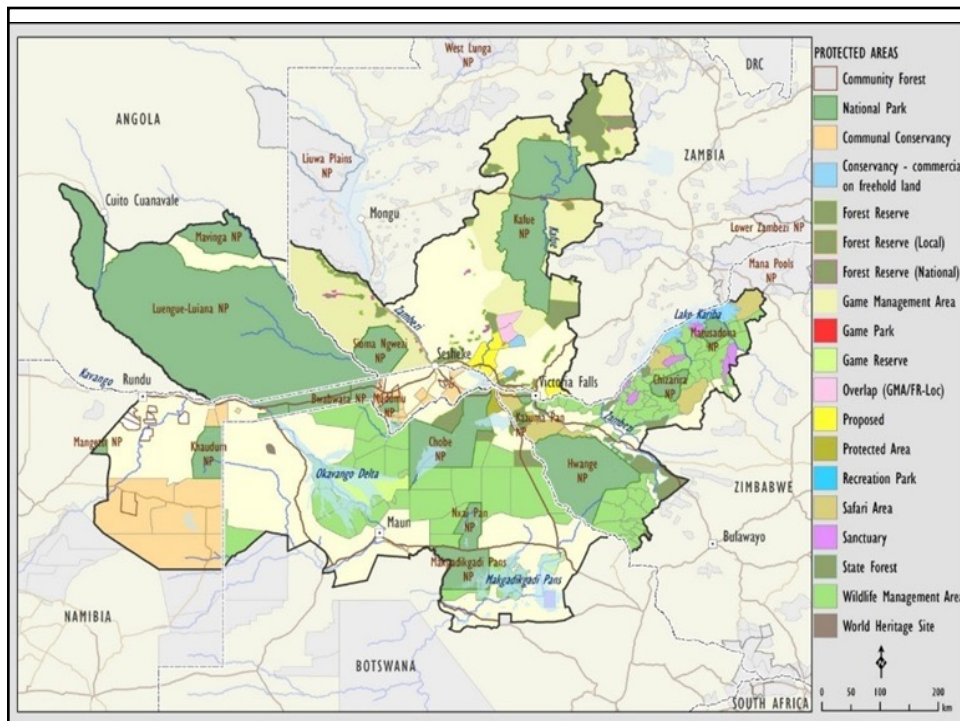


NAMIBIA UPDATE



KAZA
Animal Health Sub Working Group meeting
11-13 June 2024
Livingstone, Zambia

1



2

A. EMERGING LIVESTOCK & WILDLIFE HEALTH CHALLENGES IN THE KAZA LANDSCAPE

- **OUTBREAK**
 - Livestock :Pasteurella outbreak in cattle in Zambezi floodplains. Sept-Nov 2023
 - Farmers reported animal deaths to KM SV, originally thought to be due to the drought, however as the number of deaths increased, samples were taken and Pasteurella was isolated.
 - At that time Zambia was experiencing an anthrax outbreak, however all samples tested negative for anthrax. Further investigations revealed some deaths were from starvation, some from heartwater but most from Pasteurella. Testing was performed by the Namibian CVL.
 - GRN intervention , vaccination- Pasteurella and Supervax(anthrax, black quarter and botulism). Rains arrived and fodder issue resolved.
 - Mortalities- 20 cattle samples confirmed to have Pasteurella by CVL, however total number suspected to be higher.
 - GRN Intervention-Vaccination campaign-total cattle vaccinated 41 908(three constituencies, total population approximately 50 000) Pasteurella Supervax, multimin, ivermectin, Fluconazole
 - Lesson learnt-Communication with neighboring countries /KAZA member states critical .

3

A. EMERGING LIVESTOCK & WILDLIFE HEALTH CHALLENGES IN THE KAZA LANDSCAPE cont.

- **Outbreak/Incidents cont.**
 - Wildlife: Anthrax
 - Elephant in Zambezi region-2 in November 2023
 - Samples taken by state vet after being informed of mortalities in elephant and buffalo.
 - Having the Vic Falls Reference Lab MOU in place , would cut down on diagnosis time.
 - Other challenges
 - Stock theft-movement of livestock illegally with no regard for disease status between member states.
 - Sociopolitical –cattle in Bwabwata-ongoing discussions.

4

B. ACTIVITIES IN THE KAZA LANDSCAPE

- Vaccinations Campaigns-DVS June 2023-May 2024
 - FMD- Zambezi/Kavango East-200 000 Tri-valent;200 000 Type O
 - CBPP-200 000
 - CBPP and FMD coverage 89%
- No state controlled outbreaks of the following in the last year:
 - FMD,CBPP,PPR(not yet detected in Namibia),HPAI, joint activities with neighbours currently
- Export abattoir in KM, exports CBT produced beef to:
 - FMD free zone of Namibia ;Angola ;DRC ; Ghana
 - No H4H yet, imagine the possibilities if there was!
- Hosted meeting with 5 KAZA Partner states –September 2023 in KM , focusing on CBPP, FMD, PPR)-refer to Joint targeted surveillance(Priority activities)

5

C. CHALLENGES IN THE KAZA LANDSCAPE

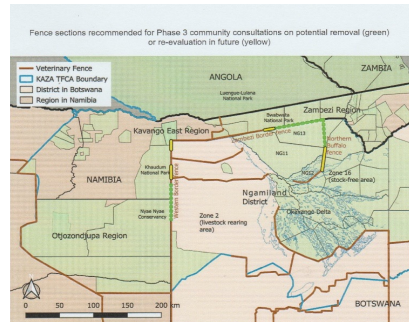
- **Namibia New Challenges since Jun 2023**
 - Stock theft-movement of cattle between different disease zones
 - Dilapidated state vet office-funding assistance needed to construct and expand the KM SV offices
 - Geo-social-political –Bwabwata NP
 - Political will-must remove cattle
 - In order to do this , the strategy for livestock removal must be finalized(MEFT to meet DVS June/July), present to cabinet in September.



6

D. FENCING ISSUES RELEVANT TO KAZA

- New Buffalo fence hasn't been erected yet due to negotiations with the Hambukushu, fencing and equipment has already been purchased by WWF.



7

E. RECOMMENDATIONS TO THE KAZA AHSWG

- Partner state disease synchronization(reporting and vaccinations) imperative for harmonious disease control.
- In house(country level) disease protocols to be developed and then cross country collaboration.



8

THANK YOU

- QUESTIONS

