



REPUBLIC OF NAMIBIA

MINISTRY OF AGRICULTURE, WATER AND LAND REFORM
Directorate of Veterinary Services

LIVESTOCK SITUATION IN BWABWATA NATIONAL PARK

Dr Albertina Musilika Shilongo

13/06/2023

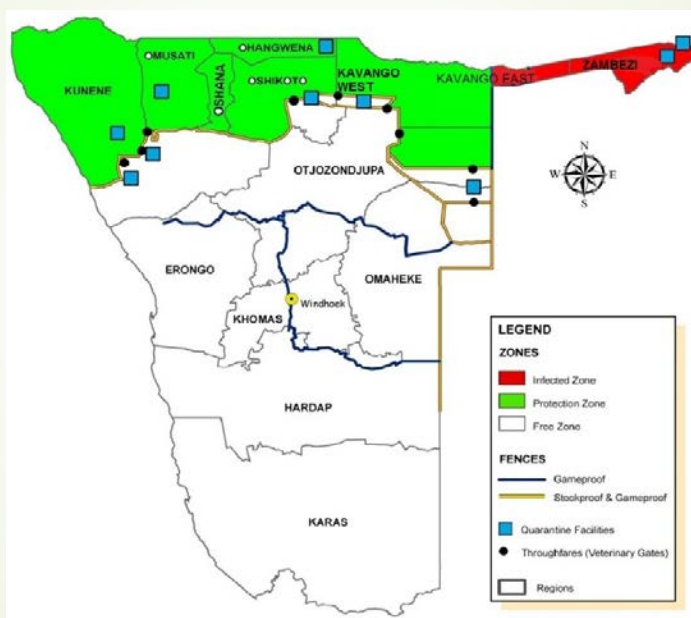
Presentation outline

- 1. Disease Control Zones
- 2. Veterinary Focus Areas
- 3. Livestock Status in Mbwabwata National Park
- 4. Animal Health Status
- 5. Challenges

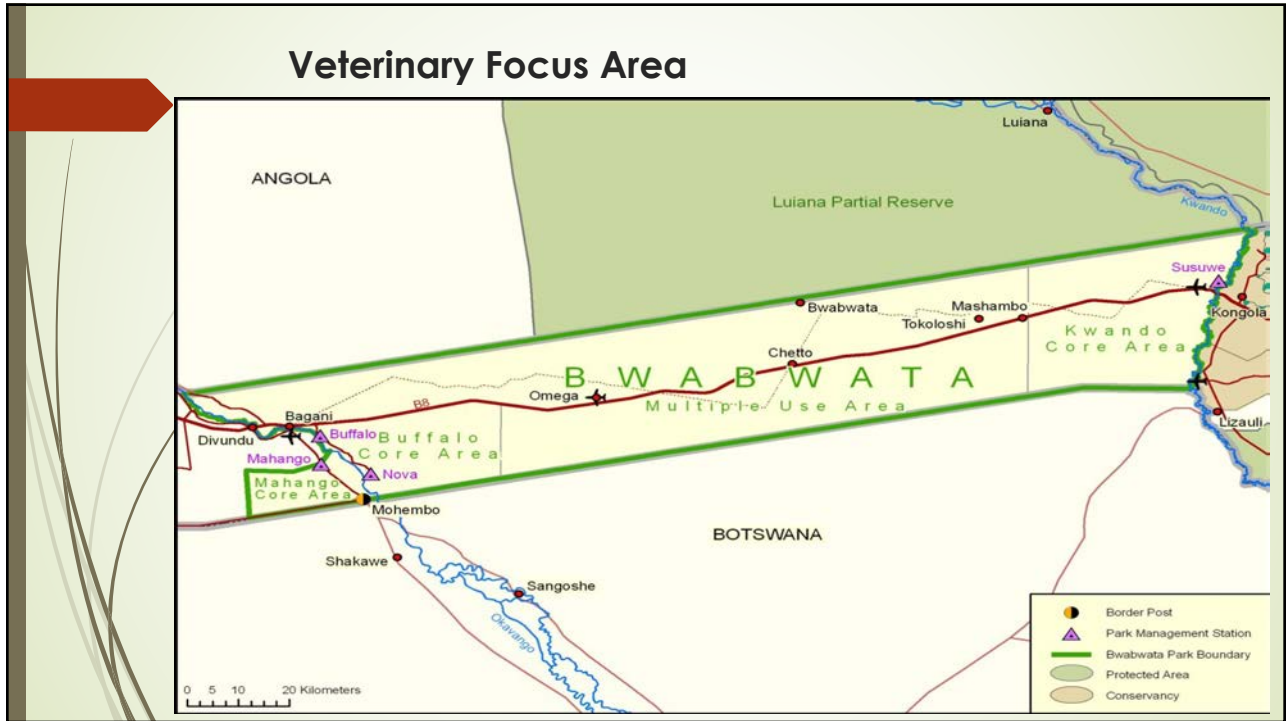
Disease Control Zones of Namibia

- According to the Animal Health Act 1 of 2011
- Country divided into three Foot and Mouth Disease(FMD) Zones namely:
 - Free Zone
 - Protection Zone
 - Infected Zone

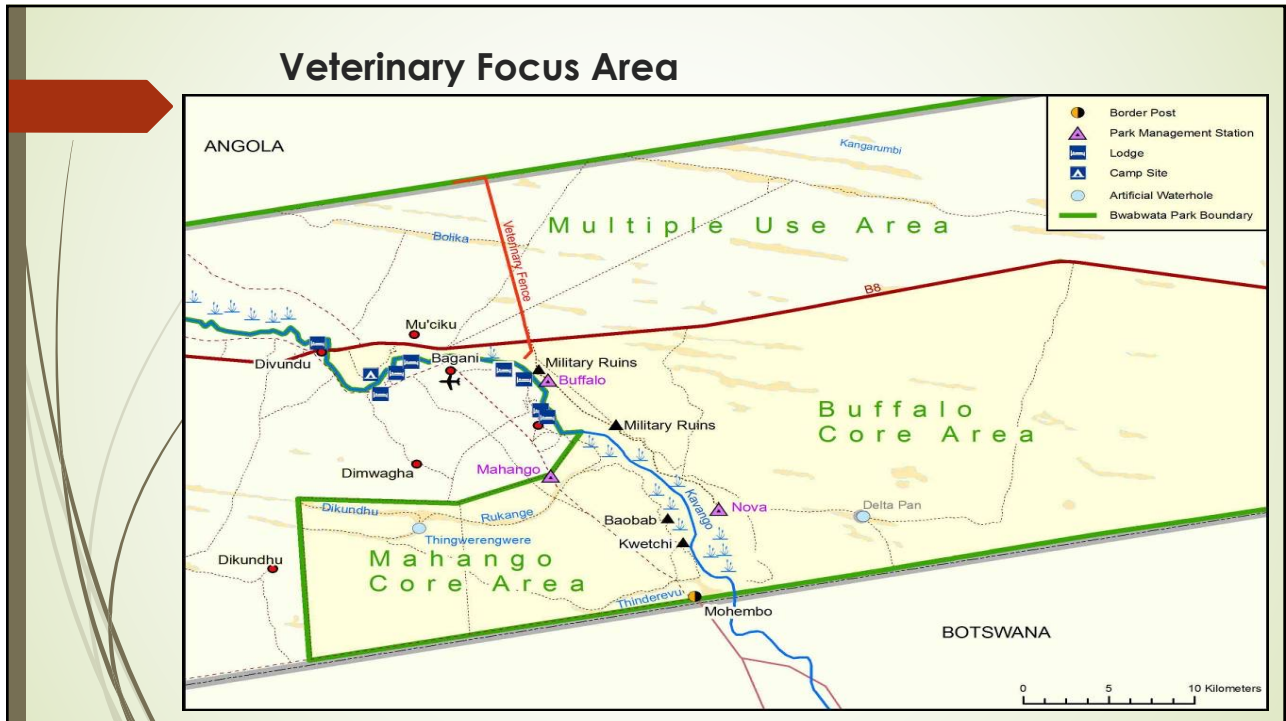
FOOT AND MOUTH DISEASE ZONES



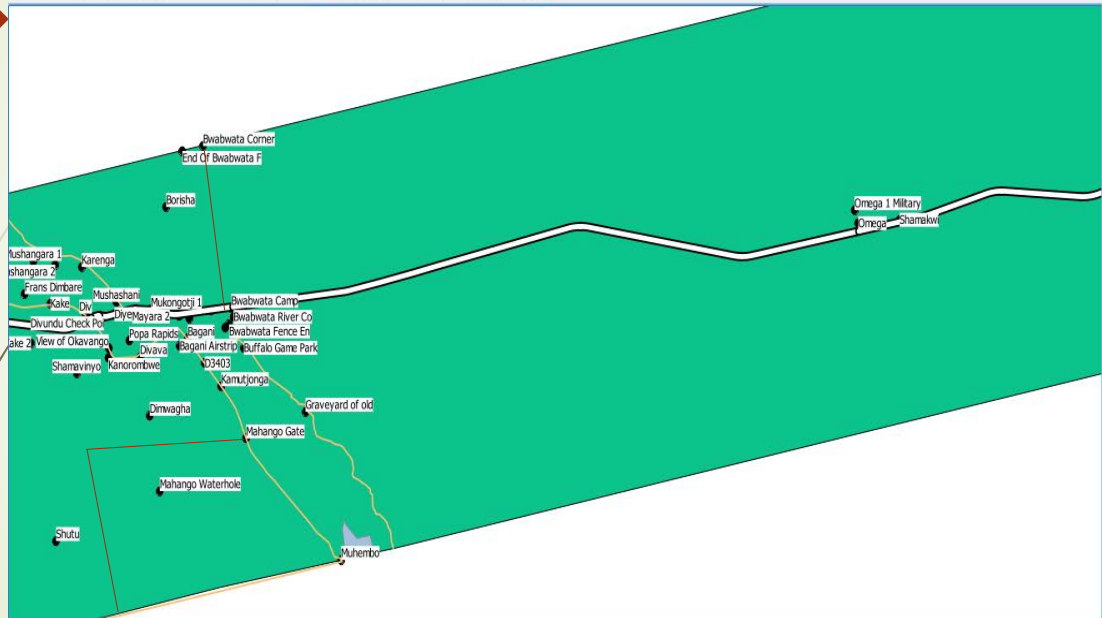
Veterinary Focus Area



Veterinary Focus Area



Veterinary Focus Area – (Crush pens)



Veterinary Focus Area – (Crush pens)

➤ Mwtjiku Block

- From Divundu Check Point to Bwabwata Veterinary Camp/METF Check Point/Gate
- Crush pens within Mwtjiku Block: Mwtjiku, Mushashani, Karenga and Mushangara

➤ Omega Block


- Crushpens are located within Omega 1 vicinity
- Crush pens within Omega Block are: Omega and Shamakwi

Veterinary Focus Area – Crushpen Coordinates

Name of crushpen/establishment	Co-ordinates
Mwitjiku	S 18°05.849' E021°37.381'
Karenga	S 18°03.907' E021°32.437'
Mushangara	S 18.06114° E021.49949°
Mushashani	S 18°05.289' E021°34.203'
Shamakwi	S 18°02.040' E022°14.089'
Omega	S 18°02.176' E022°11.984'

Veterinary Focus Area –Livestock Status

Crushpen	No. of Livestock Keepers	Cattle	Small stock
Mwitjiku	54	2 558	478
Karenga	12	579	213
Mushangara	22	1 518	220
Mushashani	26	1 090	138
Shamakwi	21	809	117
Omega	33	1 479	211
Grand total	168	8 033	1 377



Veterinary Focus Area – Livestock Status in Bwabwata NP

MOVEMENT OUT OF BWABWATA NP

- Bwabwata NP is situated within the FMD INFECTED ZONE
- Livestock (cattle and small stock) can only move within the INFECTED ZONE and not outside
- Area where livestock from Bwabwata NP can move into are:

Mukwe Constituency in Kavango East Region or to
Zambezi Region

NB #Names of farmers to be affected on attached document

INFORMATION EXTRACTED FROM THE NAMLITS



Wildlife Interaction with Livestock

- FMD outbreak in 2008 at Kamutjonga
- FMD outbreak in 2014 at Mwitjiku
- More buffalo population in the park
- There were less inhabitants within Mukwe Constituency
,,,,,Prompted DVS to move the Disease Control Point from
Bwabwata to Shamangorwa (gazetted 2015)

Wildlife Interaction with Livestock (cont'd)

- Diseases of concern to DVS when livestock:
 - Malignant Catarrhal Fever, Anthrax, FMD , African Swine Fever
- Destruction of infrastructure, maintenances cost high of infrastructure

CBT

- Namibia is a champion on the approach
- Approved control program
- Vaccination program
- Quarantine camps
- Approved export abattoir



Challenges

- Cattle moved into Bwabwata NP without permits
- Illegal movement
- Straying of animals
- Cattle theft
- .



Challenges Cont.

- Shortage of funds
- Veterinary Services under pressure to attend to animal health within the BNP
- Lack of collaboration and harmonization activities



THANK YOU