

- Livestock, Wildlife & Diversified Livelihoods: Lessons from Ngamiland, Botswana

Dr Letlhogile Modisa, Chief of Party

**Tuesday 27 September 2022,
Zambezi Lodge, Katimamulilo Namibia**



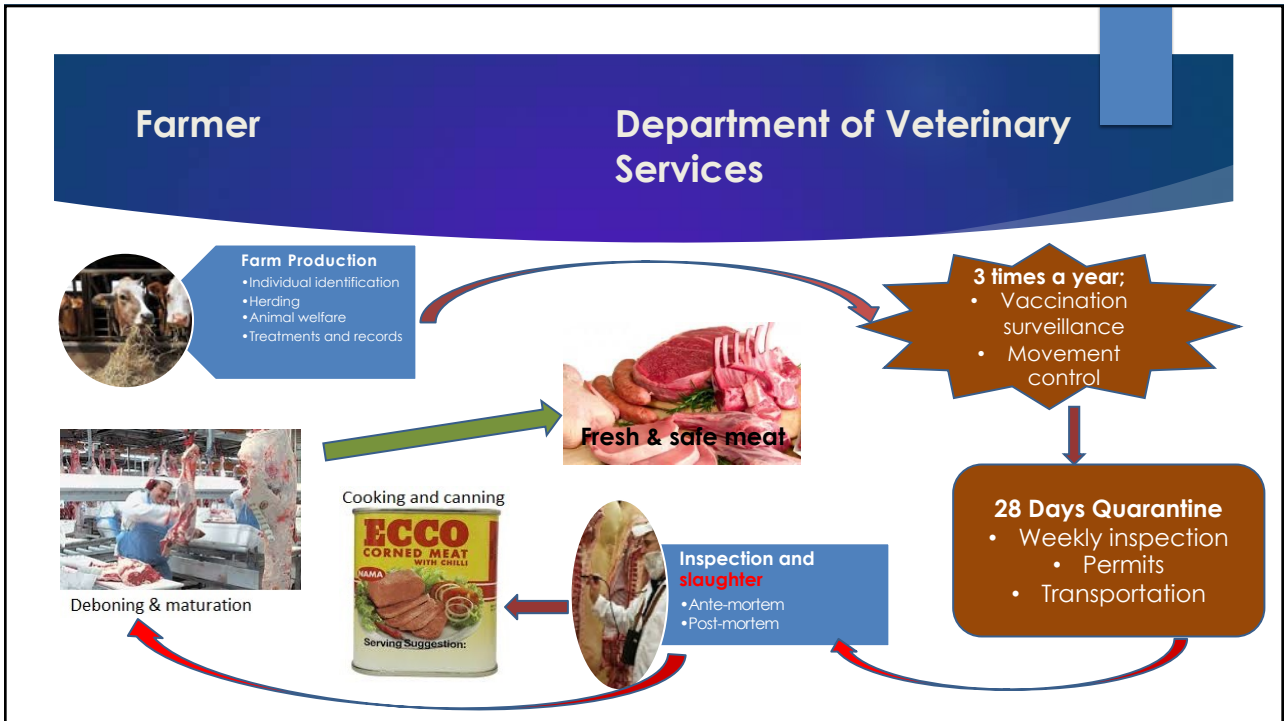
Geographical approaches

- Based on fencing of communal areas into zones, compartments
- Very high costs of construction and maintenance
- Has a significant impact on wildlife migration routes
- It might have some benefits in preserving some areas
- Based on management of movement of animals



What is Commodity Based Trade?

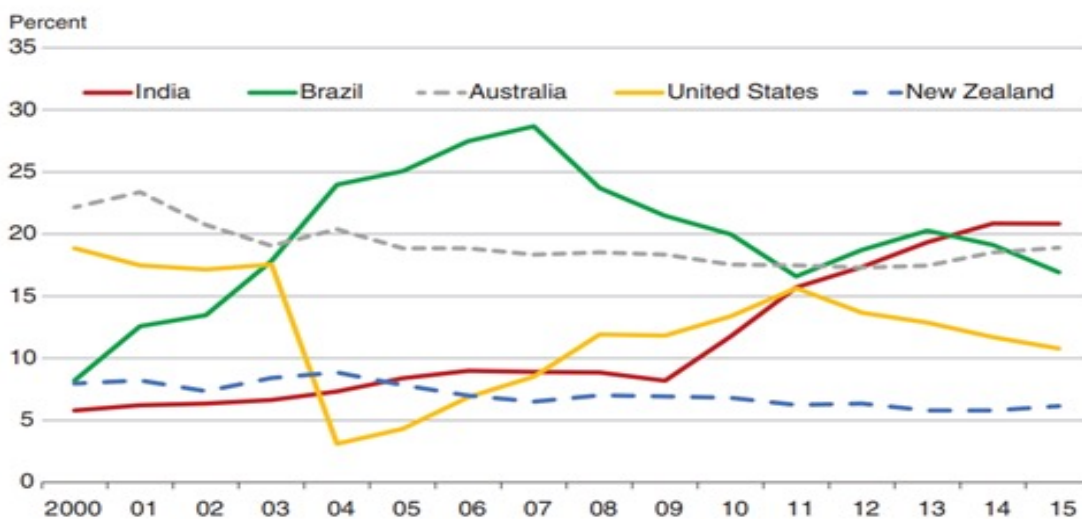
- A concept of focusing on the safety of the product rather than geographical approach to disease control.



Why Commodity Based Trade??

- Geographical approaches are expensive to sustain
- The population of elephants have a significant impact on fence maintenance
- Outbreaks of FMD have been taking place almost annually
- Farmers have not been able to slaughter cattle for years
- **Interventions: cash advances and export of live animals not sustainable**
- Cattle populations not controlled
- Eminent poverty cycle leading to poaching and wildlife conflicts
- Can we trade in animals and their products in the face of these outbreaks
- Phakalane declaration to adopt CBT in SADC in 2012
- OIE Adoption of chapter *Trade in safe commodities* in 2015

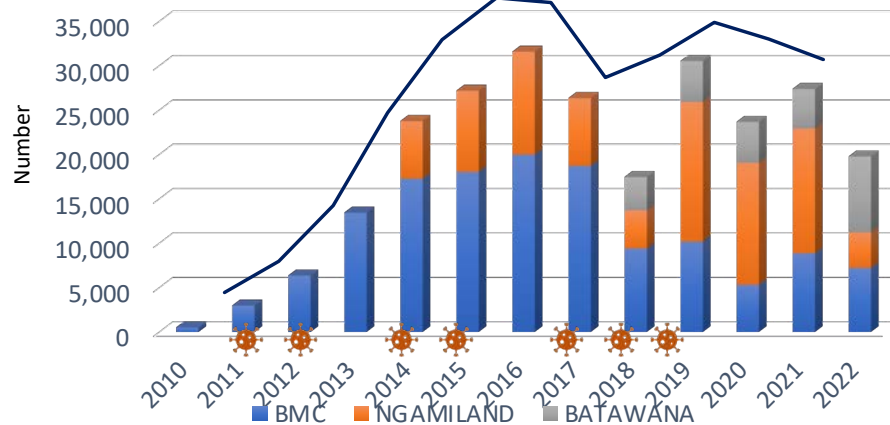
Global market shares of major beef exporters



Note: Includes fresh, chilled, frozen, and prepared beef.

Source: USDA, Economic Research Service using data from USDA, Foreign Agricultural Service, PS&D Online database.

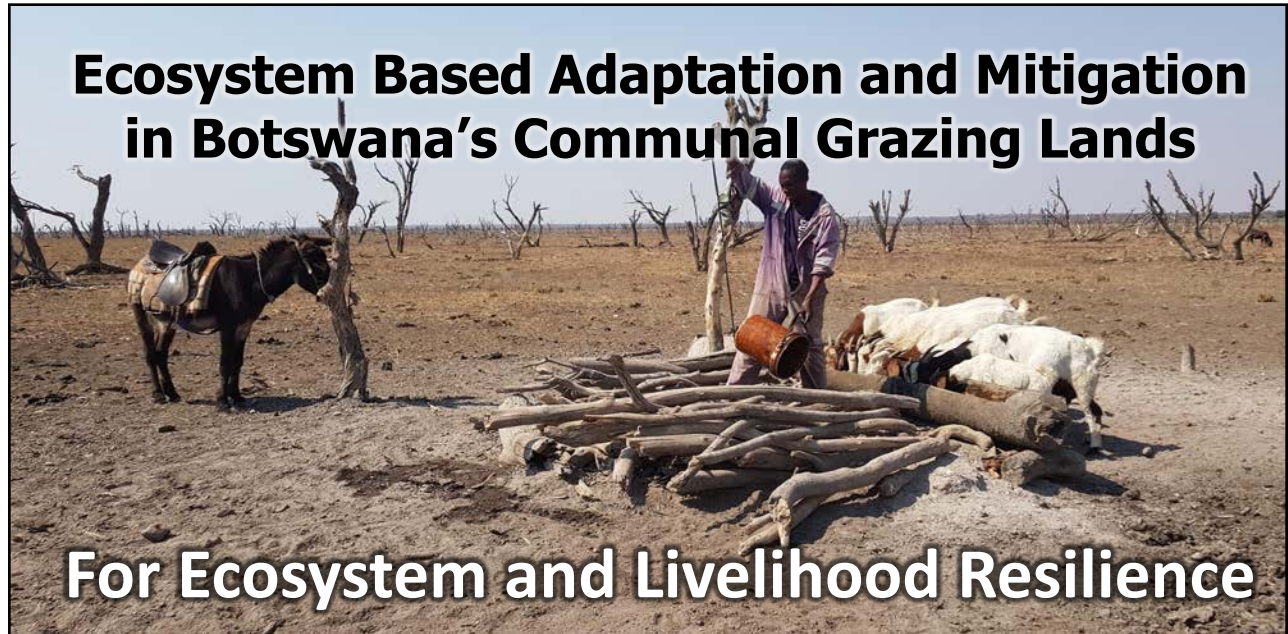
CBT SLAUGHTER FIGURES FROM NGAMILAND



Benefits of CBT

- Control of FMD even with fence destruction
- Slaughter of animals even in the face of outbreaks
- Cattle population control
- Compatible with wildlife management
- Access to a wider range of markets
- Significant positive impact on house hold income
- Revival of the National Committee on fences.

Ecosystem Based Adaptation and Mitigation in Botswana's Communal Grazing Lands

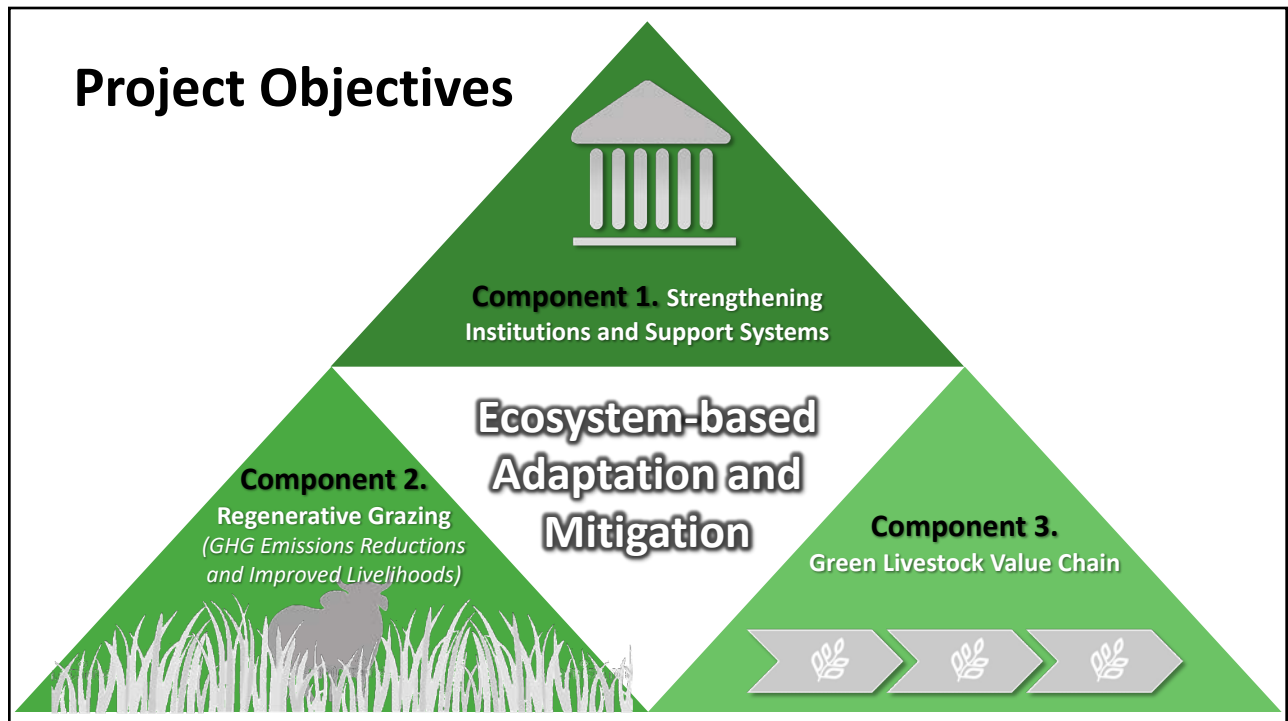
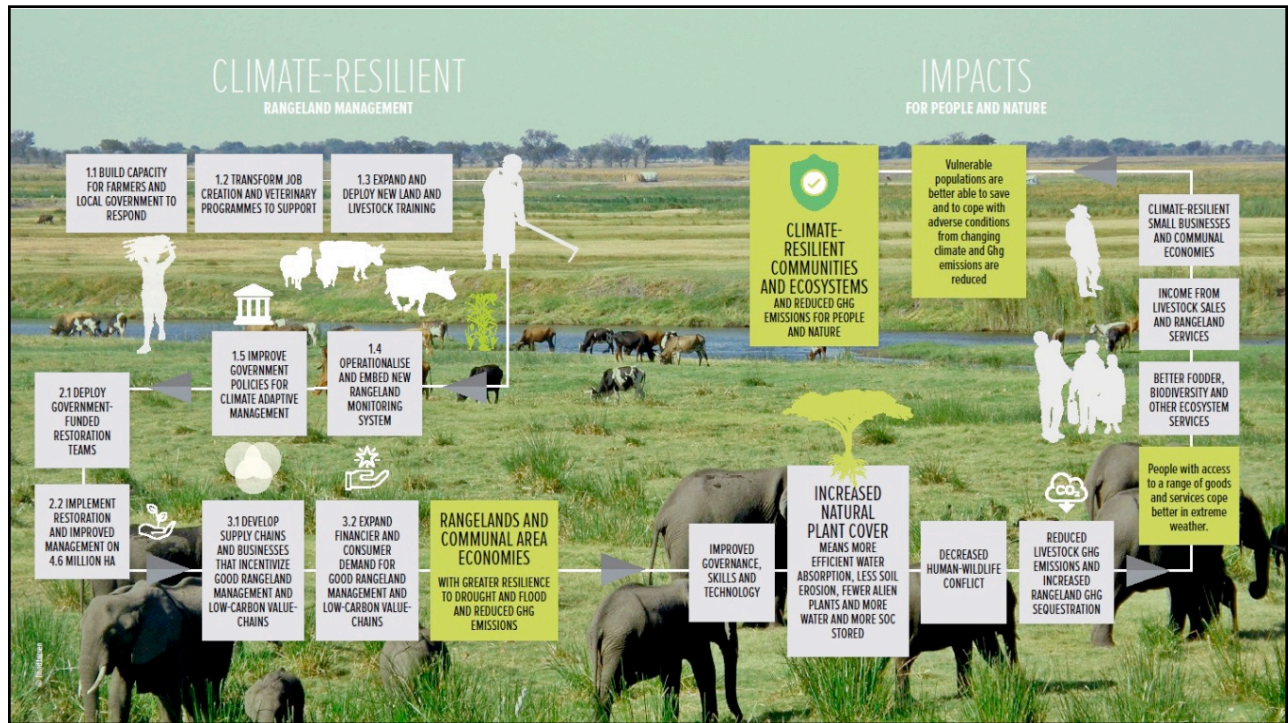


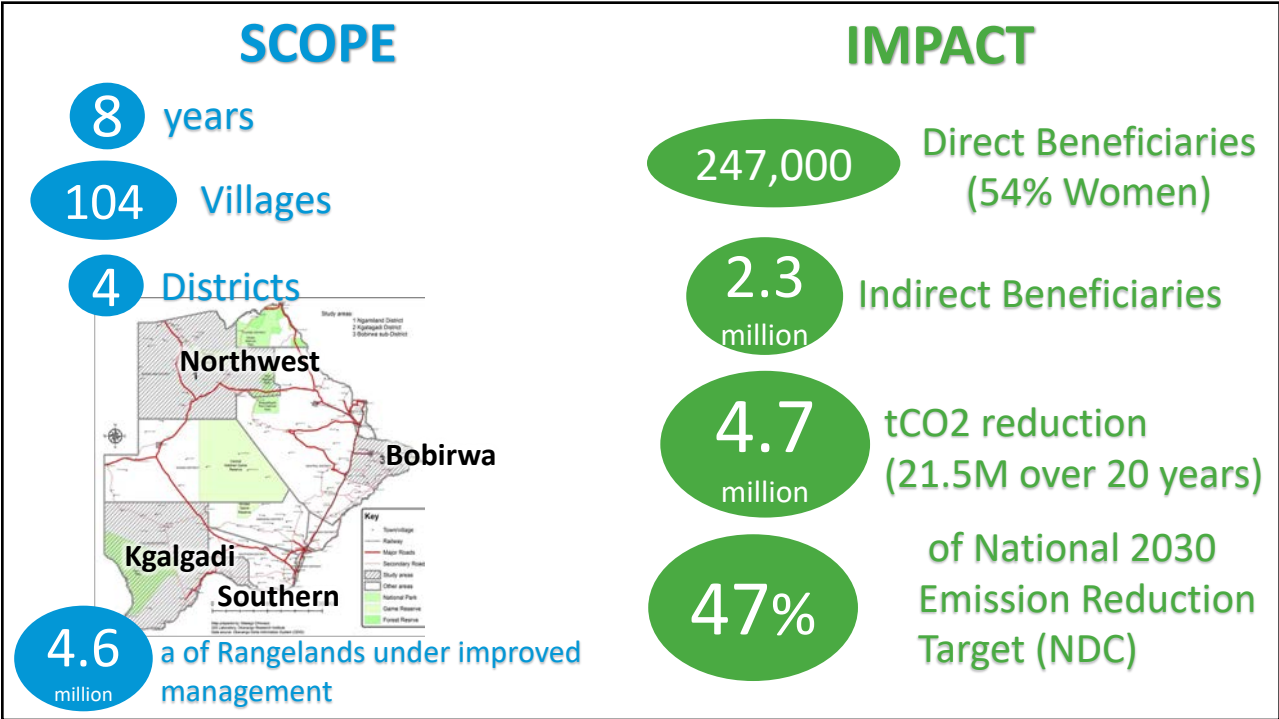
For Ecosystem and Livelihood Resilience



gaborone declaration
for sustainability
in africa







Enhanced veterinary support for climate-responsive actions and enabling communal farmers to participate in formal beef market...



Challenge in communal rangelands & wildlife-livestock interface

The problems are complex, dynamic and multidimensional
YET

The solution is simple and practical & traditionally acceptable



Strategic Herding & Kraaling

HERDER EMPLOYMENT FOR
ECOSYSTEM RECOVERY
& ECONOMIC ACTIVITY

Herding 4 Health Programme



PEACE PARKS™

CONSERVATION





Benefits of the project

- **Addresses human-wildlife conflicts reduced**
 - Predation
 - Diseases of livestock emanating from wildlife
- **Grazing land conflicts reduced**
 - Cross border cattle rustling and conflict
 - Invasion of game parks by cattle and vice versa
- **Enhancement of livestock value chains**
 - **Improved livestock production parameters**
 - Compliance to markets
 - Antimicrobial resistance
 - Animal disease control
 - Branding of Botswana beef
- **Attraction of youth to livestock farming**

Acknowledgements

- Dr Gavin R Thompson
- Dr Mary-Louise Penrith
- Prof Steve Osofsky the AHEAD team

Thank You



CONSERVATION
INTERNATIONAL



GREEN
CLIMATE
FUND



REPUBLIC OF BOTSWANA



gaborone declaration
for sustainability
in africa