

## WILDLIFE HEALTH IN KAZA – A PERSPECTIVE FROM NAMIBIA



Dr Janine Sharpe  
Game Capture Veterinarian  
Ministry of Environment, Forestry and Tourism

## OVERVIEW OF WILDLIFE IN NAMIBIA-KAZA AREA

- ✘ Abundant and diverse wildlife species
- ✘ Jewel of Africa
- ✘ Important to protect because:
  - + Genetic diversity through inter and cross country migrations
  - + Livelihood of local residents
    - ✘ Job creation: tourism( lodges, guides, hunting)
    - ✘ Meat from hunts goes to local communities
    - ✘ Conservancy income for community benefit



## OVERVIEW OF WILDLIFE IN NAMIBIA-KAZA AREA

### × National Parks

- + Bwabwata( Buffalo & Kwando Core)
- + Mudumu
- + Nkasa Rupara
- + Mahango
- + Khaudum



### × Wildlife roam in unfenced parks-migrating between parks and countries through

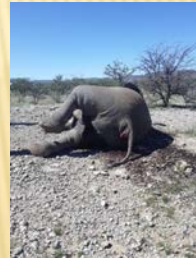
- + Conservancies
- + Communal land
- + Private land

**BUT**

ALL GREAT AND BEAUTIFUL THINGS COME AT A  
COST....

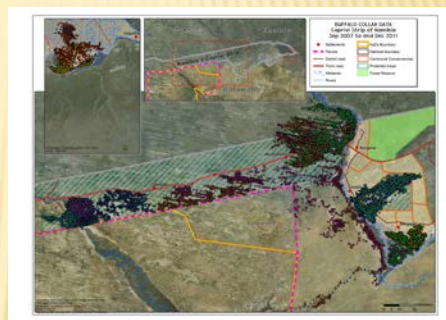
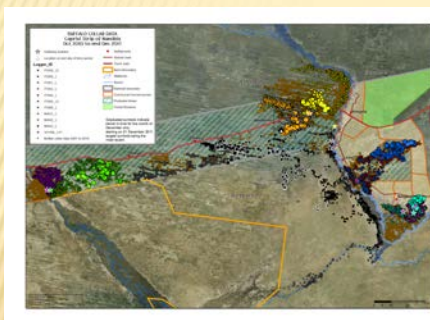
## OVERVIEW OF WILDLIFE IN NAMIBIA-KAZA AREA

- ✗ Migrations result in:
  - + Human wildlife conflict
  - + Disease spread
    - ✗ FMD!!!
    - ✗ Anthrax
    - ✗ Less common/ reported: Theileria, Rabies, Brucella, IBR/ Herpes virus, Rift Valley Fever(pic)
    - ✗ bTB???
    - ✗ CBPP???
  - + Remember-Zoonotic Diseases
  - + Poaching



OCT 2010-DEC 2011

SEPTEMBER 2007-2011



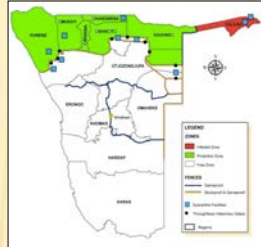
## OVERVIEW OF WILDLIFE IN NAMIBIA-KAZA AREA

## OVERVIEW OF WILDLIFE IN NAMIBIA-KAZA AREA

### MOST SIGNIFICANT/HIGHEST ECONOMICAL IMPACT

- ✗ Foot and Mouth Disease
- ✗ Highly **contagious, high morbidity, low mortality, difficult to control, acute, viral disease of economic importance.**
- ✗ SAT 1, 2, 3 and O are southern African types which altogether have 28 subtypes. Zambezi region – mainly SAT 1, 2, SAT 3 and recently O (in cattle-needs testing to confirm in buffalo)
- ✗ **Buffalo(Syncerus caffer )** are reservoirs of FMD for cattle.
- ✗ Buffalo may become infected once their maternal immunity lapses-persistent and in-apparent carrier for up to 5 years
- ✗ Other cloven hoofed species can become infected and carriers of the virus to different degrees

VCN



## OVERVIEW OF WILDLIFE IN NAMIBIA-KAZA AREA

### SOLUTION: COMMODITY BASED TRADE(CBT)

- ✗ Allow movement and export of the "Red Zone" cattle meat.
- ✗ FMD and CBPP
- ✗ Income to local cattle owners: access to foreign markets
- ✗ CBT requirements:
  - + Animals stayed in one area for 3 or more months
  - + Cattle have been vaccinated
  - + Matured (above 2 degrees Celsius and below pH 6), de-boned & LN Removed
  - + frozen at 21°C for more than 21 days
  - + vacuum packed
  - + Quarantine the cattle for 30 days in a government certified quarantine facility
  - + Inspect cattle on the day of quarantine facility entry
  - + Inspect the cattle before transportation to the abattoir
  - + Farm of origin inspected for no outbreak

### BENEFITS OF CBD FOR WILDLIFE

- ✗ Increased Tolerance to wildlife
- ✗ Higher household incomes
  - + Diverse and resilient rural livelihoods
- ✗ Improved animal husbandry
  - + ↑ Vaccination of herds
  - + ↑ Herd management
  - + ↑ Herd protection



## OVERVIEW OF WILDLIFE IN NAMIBIA-KAZA AREA

### MOST SIGNIFICANT/HIGHEST ECONOMICAL IMPACT

- × Anthrax
- × Brucellosis
- × Rabies
- × T.Parva(Corridor Disease)
- × IBR
- × Helminths-Echinococcus
- × Ticks
- × bTB not confirmed in Zambezi/Kavango East yet
- × Contagious Bovine Pleuro-Pneumonia-not confirmed in buffalo
- × Lumpy Skin-Not confirmed in buffalo



## OVERVIEW OF WILDLIFE IN NAMIBIA-KAZA AREA

- × Only way to know for sure:
- × Disease surveillance in wildlife:
  - + COSTLY
    - × Helicopter
    - × Veterinarian
    - × Wildlife veterinary drugs
    - × Collars/quarantine-TB
    - × Lab testing-CVL, Vic Falls?
    - × Time
    - × Terrain



## OVERVIEW OF WILDLIFE IN NAMIBIA-KAZA AREA

- + Helicopter
  - × Anything from N\$ 16 000.00-N\$ 26 000.00/hr
  - × Elephants-work on 30min-hr/animal
  - × Buffalo- 4-6 animals/hr
- + Veterinarian
  - × Namibia is stricter with Schedule 5 drugs than other countries-good
  - × Registered with Nam Vet Council, additional Category Wildlife , paravets available to help with predator work.
  - × MEFT vets, Pvt Vets( up to N\$ 10 000.00/day)



## OVERVIEW OF WILDLIFE IN NAMIBIA-KAZA AREA

- + Wildlife veterinary drugs
  - \* Costly
  - \* Availability
  - \* Dangerous
  - \* Elephant- N\$ 3 500.00- N\$ 4 500.00/elephant
  - \* Buffalo- N\$ 2 500.00-N\$3 000.00/buffalo
- + Post Darting monitoring
  - × Collars-costly, have to fly to find animal, welfare issues-must be removed
  - × quarantine-TB- extremely costly
  - × Eartags
- + Lab testing-CVL and possibly Vic Falls?
  - × Ensure lab stocked with raw materials for testing at all times
- + Sampling/Post Mortem
  - × Course for MEFT in March 2022
  - × Meat safety , common zoonotic diseases
  - × Revision courses yearly for safety!
- + Time- the most precious of them all!
- + Terrain-Swampland, tall trees



## OVERVIEW OF WILDLIFE IN NAMIBIA-KAZA AREA

Bottom Line: Can Wildlife and Cattle Co Exist??

- ✘ Many different opinions, however if experts in different fields continue to collaborate, respect the other industries and attend meetings such as this one-I believe they can.
- ✘ Turn words into action!

**THE END**

THANK YOU!

ANY QUESTIONS?

