

# Livestock and wildlife: The conflicts and rural development options

Unesu Ushewokunze-Obatolu, R. M.  
Spargo and Felistas Ndhlovu

Department of Livestock and Veterinary Services, Zimbabwe  
Presented at the KAZA/AHEAD conference, Victoria Falls  
November 3-4, 2016

## Role of Agriculture

- Livelihood support
- Food and nutrition security
- Employment
- Fibre, hides skins
- Downline industry input
- Nutrient recycling
- Trade

## Characteristics of current agricultural policy

- Pro-growth
  - Production efficiencies
  - Export led growth
- Pro-poverty alleviation
  - incomes
  - Reduction of public health externalities
    - Zoonotic diseases
    - Food safety
- Inclusive of the marginalised
- Pro environmental sustainability
  - Conservation farming
  - Land & biodiversity conservation
  - Waste recycling
  - Holistic resource management

## Synergies with Environmental Policy

- Biodiversity conservation
  - agro-biodiversity
  - Biological threat reduction (biosecurity)
  - Invasive species
  - Biosafety
  - Animal welfare
- Livelihood support diversification
- Inclusivity
- Support for economic growth

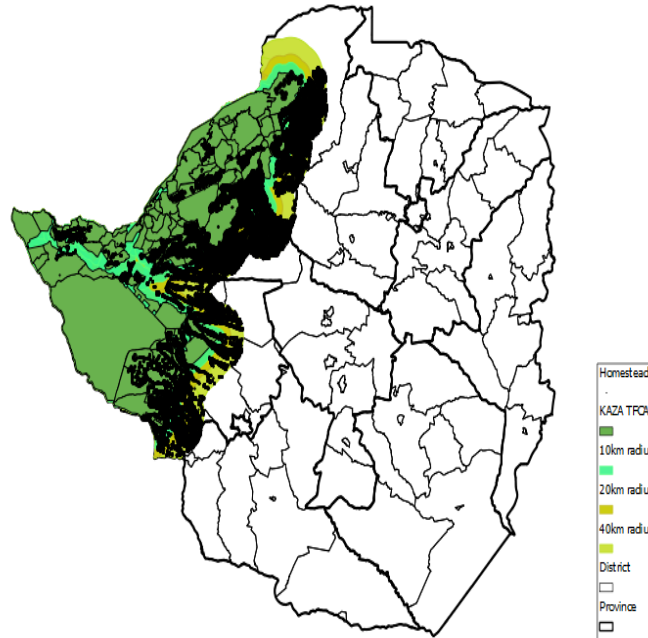
## Conflicts with Agriculture

- Unfair responsibility shouldered by communities in wildlife conservation
- Spatial encroachment
  - Grazing, area cultivated, water
- Physical security
- Biosecurity and trade standards
  - Food safety
  - Animal and plant pests and diseases &
  - Sustainable environment

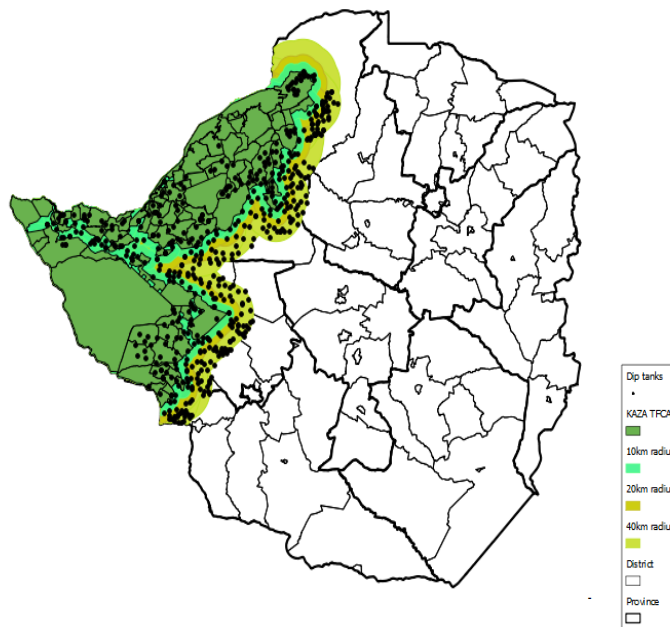
## Some biosecurity concerns in the livestock/game interphase

- Bacterial diseases
    - Anthrax, TB, Brucellosis,
  - Protozoal diseases
    - Trypanosomoses, theileriosis,
  - Viral diseases
    - Newcastle, Avian Influenza, CCHF, Ebola, Malignant Catarrh, African Swine Fever, Peste des petites ruminants, rabies, distemper
- Foot and Mouth

Map showing homesteads within the 40km radius of KAZA TFCA



Map showing dip tank distribution 40km within and around the KAZA TFCA

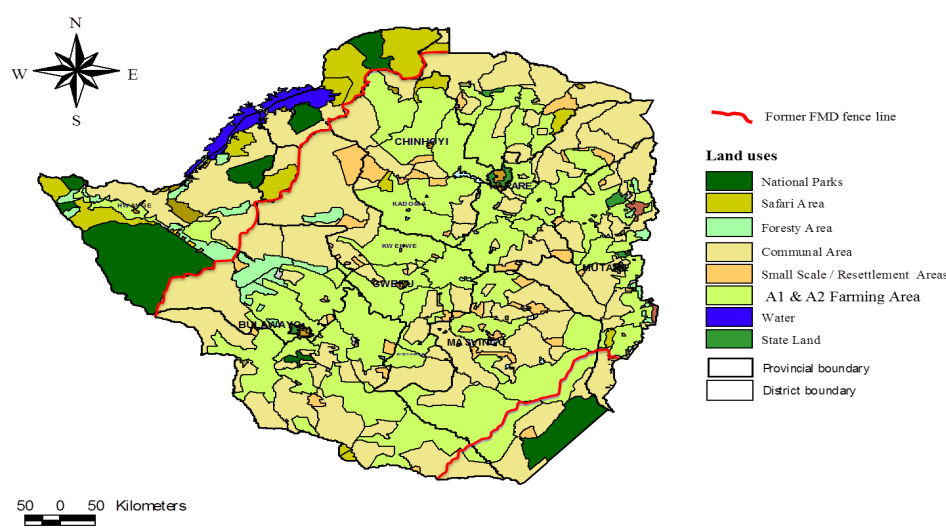


TFCA	Radius (km)	Number of homesteads	No. of Farms/Di p tanks	CATTLE	SHEEP	GOATS	DONKEY
------	-------------	----------------------	-------------------------	--------	-------	-------	--------

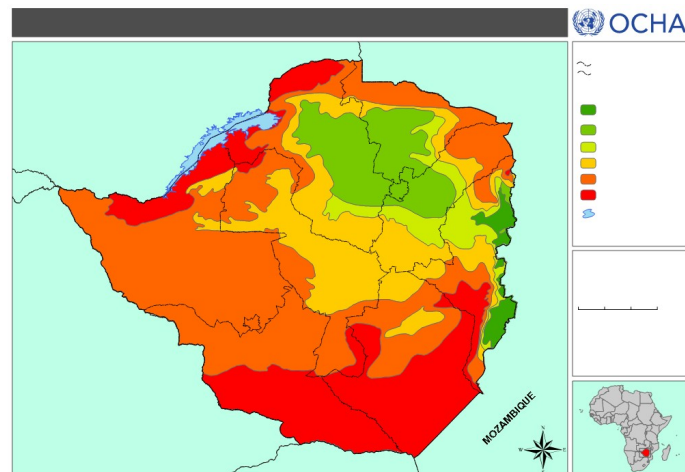
KAZA (Hwange NP)	10	91019	287	347438	20206	241767	42754
	20	126300	357	433126	22604	286440	54111
	40	195465	493	549693	34949	343930	78000

## Land classification

### Zimbabwe land use



## Map of Agro-ecological regions



## Options for risk mitigation in the interphase with game

- Disease free areas/zones
- Disease/pest freedom by risk management
  - Compartments (*what size? Recruitment*)
  - Disease-free commodity (*evidence of infection in wildlife, meeting the cost of vaccination*)
    - Risk-based management practices
      - By product treatment
      - By value chain approaches
- Measures useful in the context of export-led initiatives!!

## Conditions for integrated rural Development

- Improve control of problem animals
- Provide mechanisms for traceability on rules of origin
- Strengthen Veterinary Services
  - Surveillance,
  - sanitary control oversight
  - certification
- Stakeholder empowerment on quality & sanitary standards
  - Extension services

## Conditions for integrated rural Development

- Empower of local communities economically
  - Grassroots involvement in public policy formulation and implementation
  - Natural resource-based entrepreneurship
  - Governance in benefit sharing ventures
  - Financing and credit
  - Provision of basic public infrastructure (roads, power, services)
  - Link to employment and income needs
  - Devolve ownership to local community

# FMD Risk Profile

Target FMD risk profiles by area

