



BOTSWANA UPDATE

Animal Health Sub Working Group
meeting

17-18 November 2021

Virtual

Presenter: Dr Obakeng N. Kemolatlhe

A. EMERGING LIVESTOCK & WILDLIFE HEALTH CHALLENGES IN THE KAZA LANDSCAPE

HIGHLY PATHOGENIC AVIAN INFLUENZA (H5N1) OUTBREAK

BOKAA OUTBREAK EVENT

- Botswana recorded first outbreak of HPAI-H5N1 in August 2021 in the country affecting backyard chickens.
- The index case was in Bokaa extension area in Kgatleng District
- OIE was notified of the event
- Key stakeholders and Regional Trading partners have been notified
- The Disease Alert Team was activated to conduct investigation
- Intensive passive and active surveillance implemented in entire Kgatleng district
- Country wide passive and active surveillance intensified to establish extend of the spread of HPAI

A. EMERGING LIVESTOCK & WILDLIFE HEALTH CHALLENGES IN THE KAZA LANDSCAPE

BOKAA OUTBREAK EVENT – CONTROL MEASURES

- Movement restriction
- Surveillance
- Culling of infected and in-contacts
- Public awareness
- Export ban of live poultry and poultry products including ratites.

A. EMERGING LIVESTOCK & WILDLIFE HEALTH CHALLENGES IN THE KAZA LANDSCAPE

NORTHWEST DISTRICT OUTBREAK

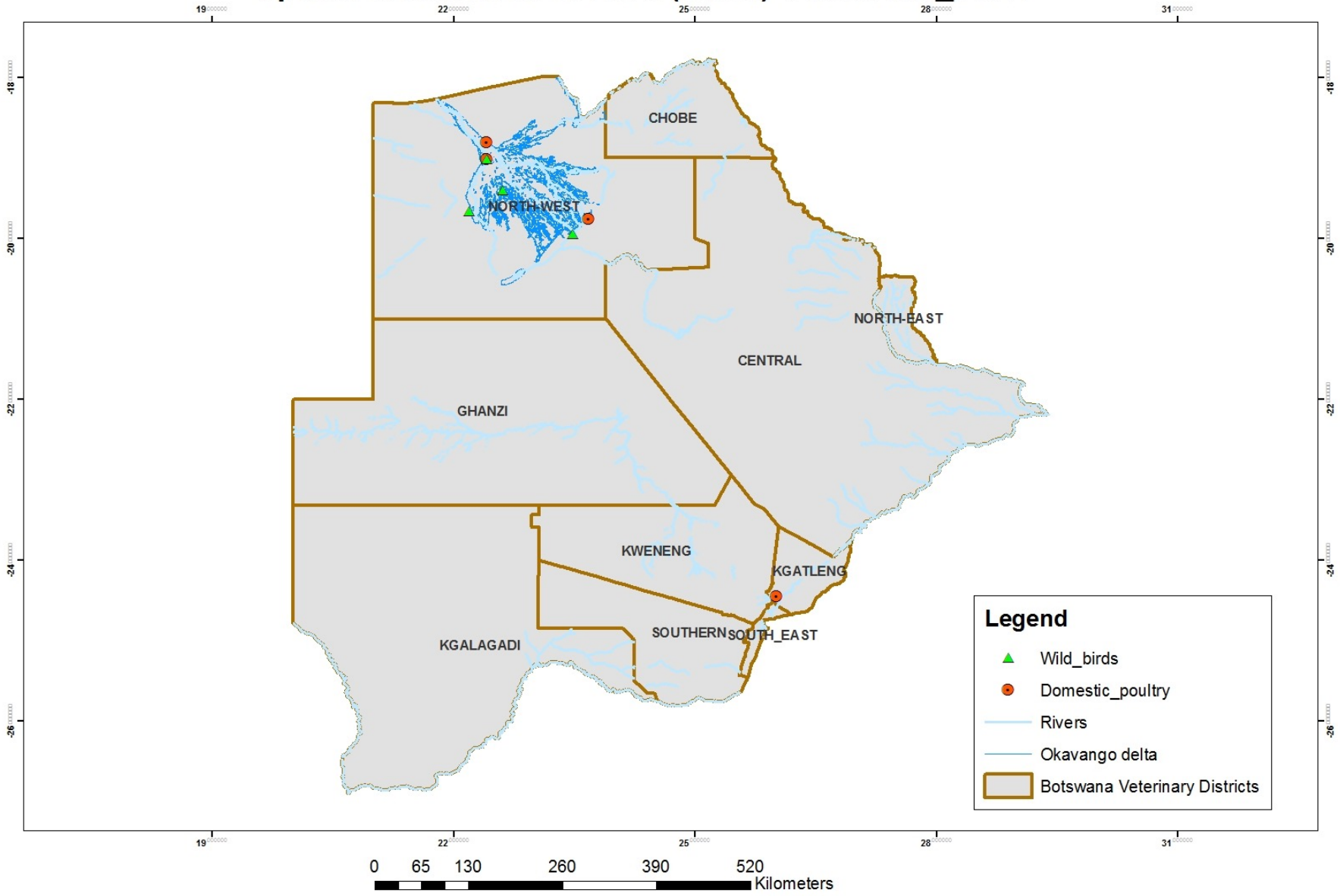
- HPAI outbreak at Shorobe, Etsha and Seronga Extension areas affecting wild birds and backyard chickens.

NORTHWEST DISTRICT OUTBREAK – CONTROL MEASURES

- Movement restriction
- Surveillance
- Culling of infected and in-contacts birds
- Public awareness
- Export ban of live poultry and poultry products including ratites.
- Gazetted country as HPAI infected



Spatial distribution of HPAI (H5N1) Outbreaks_ 2021



C. CHALLENGES IN THE KAZA LANDSCAPE

- Threat of spill-over of FMD Serotype O from Namibia and Zambia
- Threat of PPR

D. FENCING ISSUES RELEVANT TO KAZA

- Technical committee on fences consisting of various departments DWNP, DEA, Surveys and Mapping, Tourism addressing fencing issues
- Government still looking at possibility of adopting DEFRA report recommendations critically