


EXPLORING FUTURE ECOSYSTEM SERVICES: A
SCENARIO PLANNING APPROACH TO UNCERTAINTY
IN THE SOUTH EAST LOWVELD OF ZIMBABWE


9TH AHEAD-GLTFCA Working Group Meeting
Xisaka Hotel, Namaacha, Mozambique
4-6 March 2009

Cees Leeuwis and Chaka Chirozva
CASS/CERES-WUR/CIS




Introduction

- Top down initiative – massive power asymmetries and structural conditions for engagement - empowerment debate?
- Vision of development of most communities but this is missing on the ground
- IDRC Project - *Local level Scenario Planning, Iterative Assessment and Adaptive Management Project*
- Boundary spanners in forging space for change - agents in improving policy and practice?



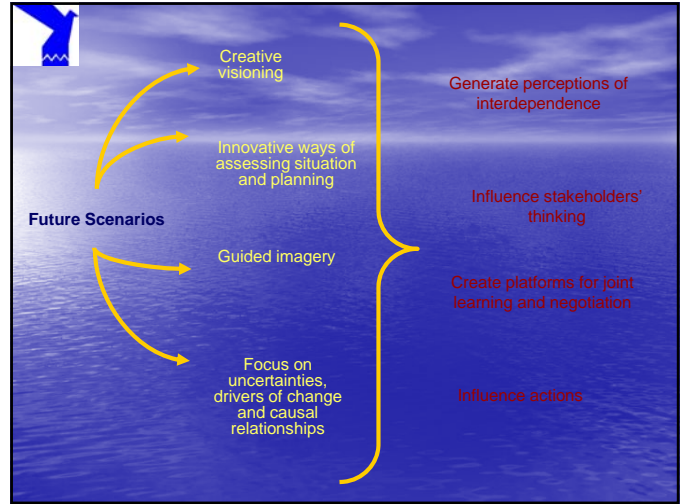
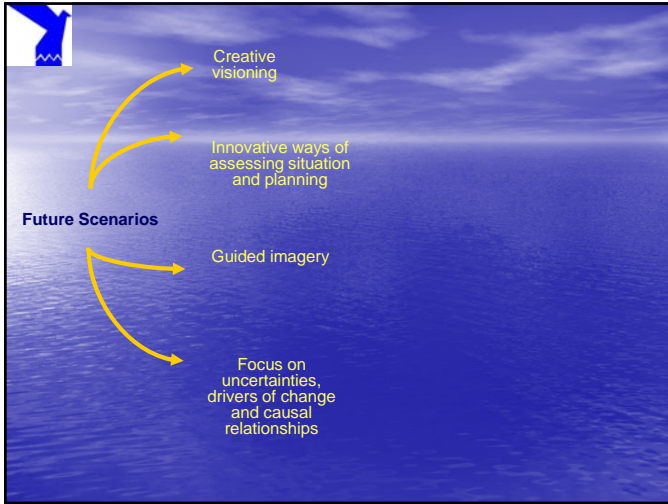
Study aim

Develop insights on the dynamics surrounding local level participatory scenario planning and explore how it can enhance self organisation, learning and empowerment of stakeholders in negotiation for the GLTFCA.



Objectives

- To explore key livelihood strategies of Sengwe Communal Area and provide an overview of key TFCA developments likely to affect them.
- Develop community scenarios and relate the community scenarios to higher level scenarios developed for the GLTFCA on concerns such as livestock/veterinary disease control, tourism etc with the aim linking multi-scale scenarios for the GLTFCA in the long term.
- To explore and define the key system processes, drivers and interactions for the future of the Lowveld using participatory scenario planning methods.
- To highlight key lessons and make comparison across wards from the preliminary scenario exercises.



- ### Project Design and Methodology
- One year research is part of PhD component
 - Five ++ areas in located in Sengwe Communal Lands
 - Principal methods include review of literature, key informant interviews, FGDs, gamut of methods from Participatory Rural Appraisal tools
 - Identification of key drivers of change for ecosystem processes
 - Facilitation that improves social learning and help change institutional relationships and capacity in negotiation
 - Context matters - tailor social learning activities to the social and ecological conditions based on
 - Scope, scale and complexity of the problem situation
 - Characteristics and contributions of different methods to bring change

