

## Monitoring fence permeability of KNP

Ken Ferguson  
Ferran Jori  
Laura Adam



Special thanks to the State Veterinary Service

## Why we need a simple cost effective fence monitoring system for KNP ?

**Principal aim:** fence monitoring system *must remain after us and for a long time*



## The Barrier Tape Symbol System (BTSS)

- Requires **barrier tape**, **marker pen** and an **envelope**
- A willing **fence worker**
- **Symbols** for main 'threats' to the fence are written on the tape and attached to the fence for later collection
- If a **carnivore**, then hair is placed in an **envelope**



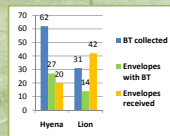
## Our training regime...



### Anomalies and problems – human and otherwise

#### Human error that includes:

- Lack of participation/incentives
- Holiday periods
- The 'Amos Anomaly' – over-representation
- Translation problems e.g. arrows
- Collecting the data from the workers
- Theft of the tapes
- A degree of co-ordination required

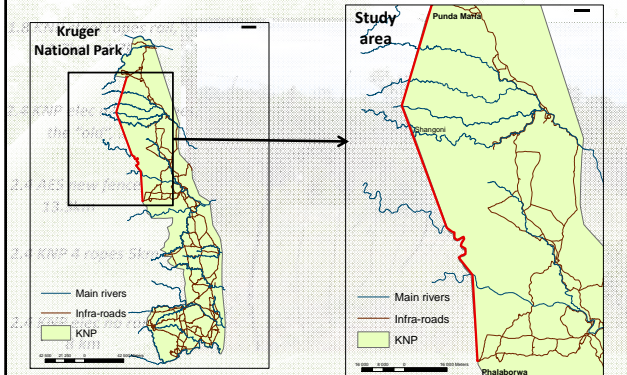


### But the good outweighs the bad...

- **Cheap** – estimated cost **R10/km per annum**
- **Gives** skills to fence workers
- **Low tech**, except for addition of cyber-trackers
- Longitudinal potential
- Gives **more precise** data than other methods

### Getting data/Current data

- Study area from **Phalaborwa to Punda Maria**, 5 types of fence



### Data processing

- **Collection of the barrier tape**, each is associated to a waypoint
- All BT are stored in a **data base**
- Sorting of the data, removing suspect data
- Statistical processing, **Excel**
- GIS processing, **ArcGis**



## Preliminary results...

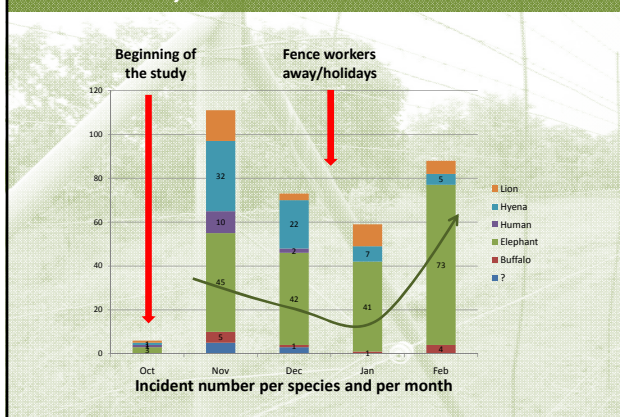
Since the 13/10/2008 337 BT collected 70 envelopes

Incident : single animal movement across the fence

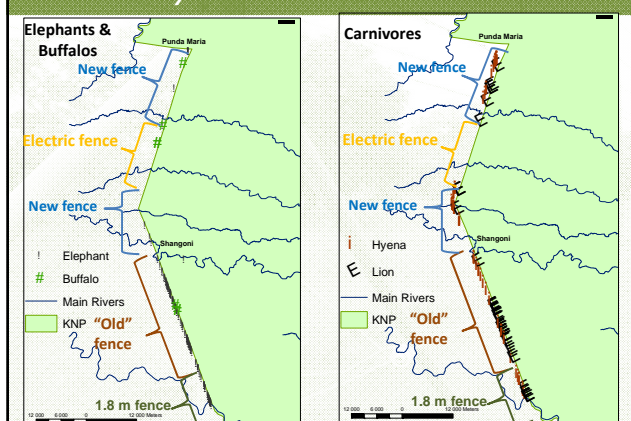
	?	Buffalo	Elephant	Human	Hyena	Lion	Total incidents per month
Oct-08	0	0	3	1	1	1	6
Nov-08	5	5	45	10	32	14	111
Dec-08	3	1	42	2	22	3	73
Jan-09	0	1	41	0	7	10	59
Feb-09	0	4	73	0	5	6	88
Total incidents per species	8	11	204	13	67	34	337
% incidents per species	2	3	61	4	20	10	100

Proportion of Incidents per species and per month

## Preliminary results...



## Preliminary results...



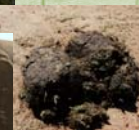
## The distribution of fence incidents and verification of the BTSS

### Animal distribution methods :

- Dung count → Transects per type of fence
- Live animals count
- Photo identification of elephant and DNA analysis

### Determination of drivers :

- Free standing water cartography
- Vegetation transects → Marula
- Cattle density



### How to improve and hand-over this method ?

- Define a **precise written/ protocol** and leave one in each picket camp
- **Cyber Tracker** —→ 1 per fence picket camps
- **Camera traps** placed in a high permeability area
- To define a **data collection strategy** for the state veterinary service



### Conclusion

#### **Barrier tape symbol system :**

- *pinpoint areas of permeability*
- *prepare mitigatory strategies*
- *Lend precision for disease modelling purposes*

