



Transboundary Protected Areas Research Initiative

www.wits.ac.za/tbpardigitalhistory

www.iucnsa.org.za/TPARI.htm

*6th AHEAD-GLTFCA Working Group Meeting
9-10 March 2006*

3/18/06

1

Presentation outline

- **Overview of the Transboundary Protected Areas Research Initiative (TPARI)** – linkages, modes of collaboration,
- **TPARI research** - themes, current research projects, recent progress
- **Current gaps in nature-based tourism research** - including hunting and photographic wildlife tourism
- **Potential linkages/collaboration between AHEAD and TPARI** – and contributions to AHEAD research priorities

3/18/06

2

TPARI in a nutshell



Research network running under auspices of IUCN-SA

- Initial funding from NSF via Centre for the Integrated Study of the Human Dimensions of Global Change, Carnegie Mellon University
- Human and social dimensions of TBPA's / TFCAs in Africa
- 28 researchers over last two years
- Two post-doctoral fellows: on tourism and CBNRM survey/assessment

3/18/06

3

International linkages

- **Key partnership:** IUCN South Africa
- **Key relationships:** DEAT, SANP, PPF, EWT, SAVANNA consortium, WCPA-IUCN TBPA Task Force, AHEAD
- **Southern African university partners:** Wits, Stellenbosch, Johannesburg, Cape Town, Western Cape (PLAAS)
- **North American universities:** Bates College, Carnegie Mellon University, Johns Hopkins, Indiana, Georgia, Berkeley Calif., British Columbia, Montana, Michigan
- **European universities:** Wagenigen, Vrije Amsterdam, TU Berlin, Finland, Mainz



3/18/06

4

Modes of collaboration

- MoU
 - Formal inter institutional MoU
 - Formal researcher MoU
- Informal agreements & informal participation in network
- Benefits:
 - Library & research platforms
 - Proofing of research topic
 - Research design
 - Logistical support & registration procedures
 - Field mentoring (academic)
 - Networking & research synergies
 - Funding & fundraising
 - Exposure and peer review (teleseminars/website)

3/18/06

5

Research themes



Human-environment relations:

- ✗ Climate variability, environmental disaster, resource limitations,
- ✗ HIV-AIDS & resource use

Decision-making and governance:

- ✗ Political ecologies, planning & participation
- ✗ PA Management and co-management

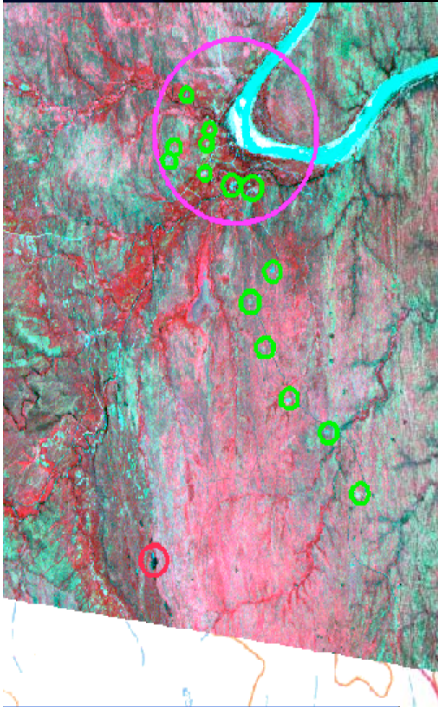
The social and economic framework:

- ✗ Land rights, resource rights and livelihoods
- ✗ Tourism development, economic development and beneficiation
- ✗ Cultural landscapes, cultural histories, cultural & social impacts

3/18/06

6

Projects



Senior researchers, post docs & PhDs

- PAs: does collaborative management make a difference? Comparative study (PhD)
- Agricultural development project next park (PhD)
- SANP approaches to engaging community (PhD)
- GLTP, ENSO events & livelihoods (PhD)
- Survey & assessment of 'CBNRM' interventions (Post doc)
- Tourism investments in GLTP (post doc)
- States, markets and conservation (PhD) GLTP history and NGO relations (post doc)
- Do TBPAs help? (PhD)
- Understandings of land & place among the displaced people from the GLTP (PhD)
- Digitisation of TEBA Archives
- Multi-objective decision-making model for Kruger to Canyons (looking for funding) (Senior)
- Agroforestry study in Limpopo National Park (PhD)
- Woodland conservation & EE: comparative SA and Nigeria (PhD)
- Indigenous knowledge systems and Disaster preparedness

7

MA / MSc



- Concept of Peace Park and implementation in SA
- Cons & livelihoods in Makandizulu, LNP
- Madimbo Corridor land claim
- Private game farms and transboundary conserv.
- Gender and Indigenous Knowledge in LNP (Hons)
- Community participation in Kgalakgadi: park perspective
- Network Analysis of 2 villages
- 2 Cultural tourism case studies
- Makuleke training project (BA Hons)
- Distribution of iron age habitation in Pafuri

3/18/06

8

Recent Progress

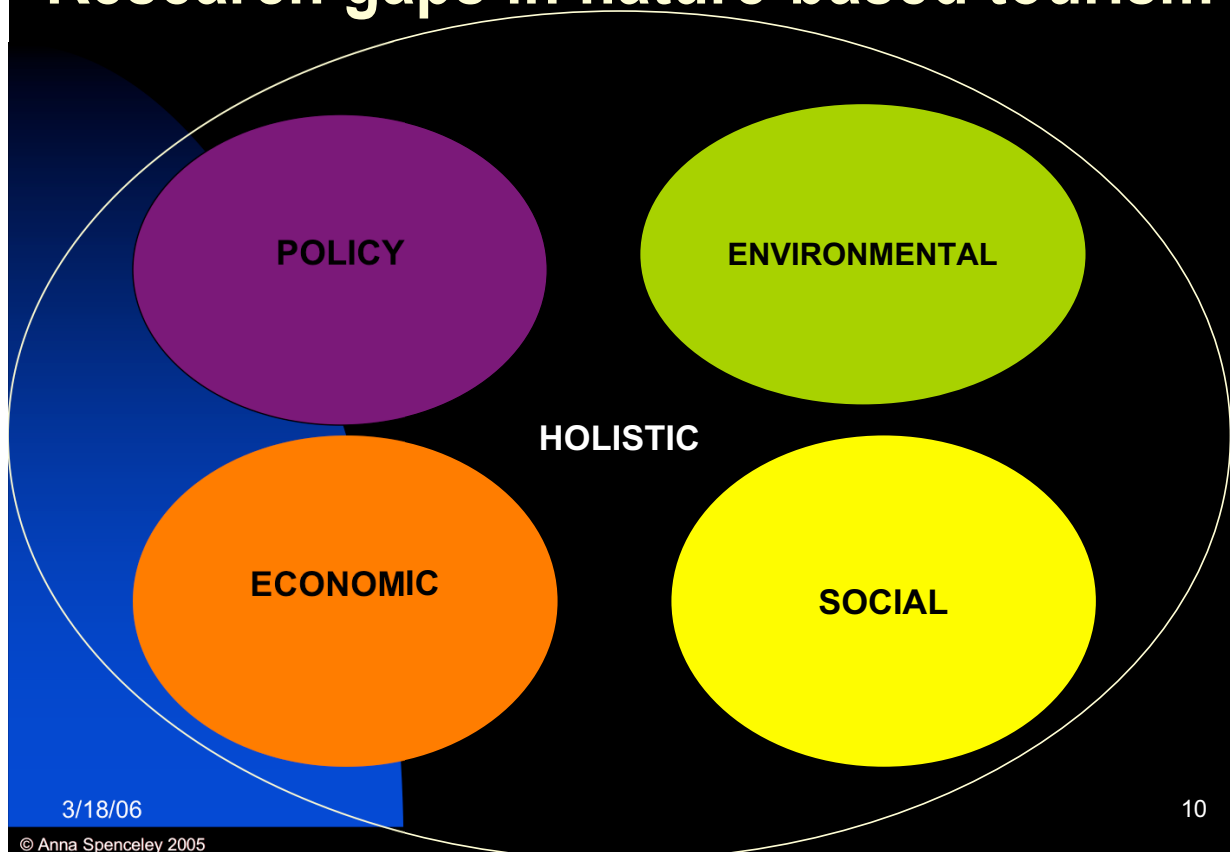


3/18/06

- USAID study – NRM case studies (Namibia, Botswana, Zimbabwe, Malawi)
- Social mapping of KNP – GIS mapping human and cultural landscape (planning phase with SANP and PPF)
- SANPAD joint projects -
 - (a) legal dimensions of TFCA conservation
 - (b) land claims and land reform in GLTP
- Postdocs on GLTFCA –
 - Dr Wolfram Dressler - completed 1-year on CBNRM – teleseminar and papers in 2006
 - Dr Anna Spenceley – 2006/7 NRF research fellowship - sustainable tourism research (2nd year)
- Post social indaba process (special edition Conservation and Society Journal)

9

Research gaps in nature-based tourism



3/18/06

© Anna Spenceley 2005

10

NBT research gaps – relevant to AHEAD



POLICY

*For Nature-based
Tourism (NBT) –
consider photographic
wildlife tourism and
hunting in particular*

3/18/06

© Anna Spenceley 2005

- What are implications of land tenure and reform for NBT, wildlife management and biodiversity conservation?
- What are the policy implications for transboundary NBT and alternative livelihood approaches?
- How does the planning approach (e.g. level of participation) influence sustainability?

11

- What are implications of animal health for NBT?
(hunting / photographic)
- What are the implications for climate change and NBT?
(two-way impacts)
- What different implications are there for WHS/TFCAs/ NPs/Biospheres for NBT and conservation and stakeholders?



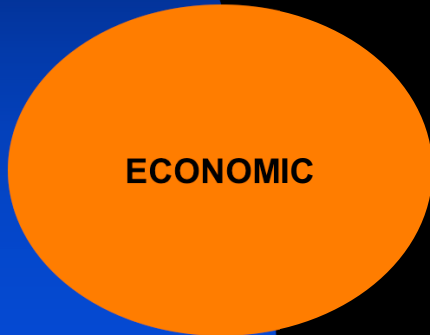
ENVIRONMENTAL

3/18/06

© Anna Spenceley 2005

12

- \$ impacts of wildlife diseases on hunting/CBT/NBT and implications for \$ to business and rural livelihoods



- What are the options/best practices for alleviating poverty through NBT?
- What is the relative importance of NBT in conservation finance?
- What are the impacts of NBT on poverty?
- How resilient are different NBT sectors? (*e.g. to instability*)
- How can risks be managed? (*e.g. disease, instability, climate change*)

3/18/06

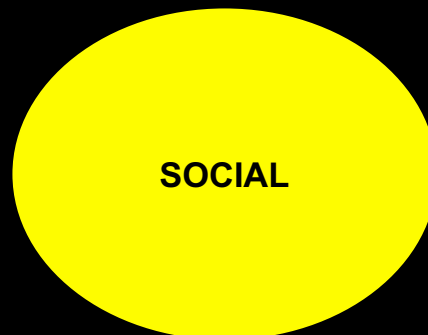
© Anna Spenceley 2005

13

- What are the impacts of human disease (*e.g. HIV/AIDS*) and wildlife disease (*e.g. BTB*) on the NBT sector?

- What are the social / cultural impacts during the destination life-cycle, and in relation to alternative livelihood options?

- What are the social, cultural and spiritual impacts of NBT?



3/18/06

© Anna Spenceley 2005

14

- **What are the dynamics between conservation, and local economic development** (esp. poverty alleviation) **and society in NBT?** (and consider sustainable alternative livelihood options)

HOLISTIC

3/18/06

© Anna Spenceley 2005

15

Potential contributions to “AHEAD-GLTFCA draft projects summary table”

- #4 Human livelihoods, animal health and ecosystem goods and services
 - ◆ Tradeoffs between alternative landuse enterprises – e.g. tourism, agriculture etc - CBA
 - ◆ Effects of alternative policies on development, adaptability and **resilience** e.g. regarding land tenure, commercialisation, PPPs
- #5 Policy support and capacity building
- # 6 Communications and outreach – teleseminars (presentation – prepared critiques – potentially wide geographical distribution – discussion), TPARI network & linkages etc.

3/18/06

16

Potential linkages AHEAD/TPARI



- Other related research options:
 - Wildlife and disease issues relating to socio-ecological systems (e.g. sustainable livelihoods, poverty alleviation implications)
 - Implications for viability of nature-based tourism as a livelihood option (hunting / photographic) / business option
 - CBA / scenario planning on wildlife, tourism & livestock options
- Access to TPARI network of socio-economic researchers
- Joint research funding proposals