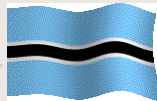




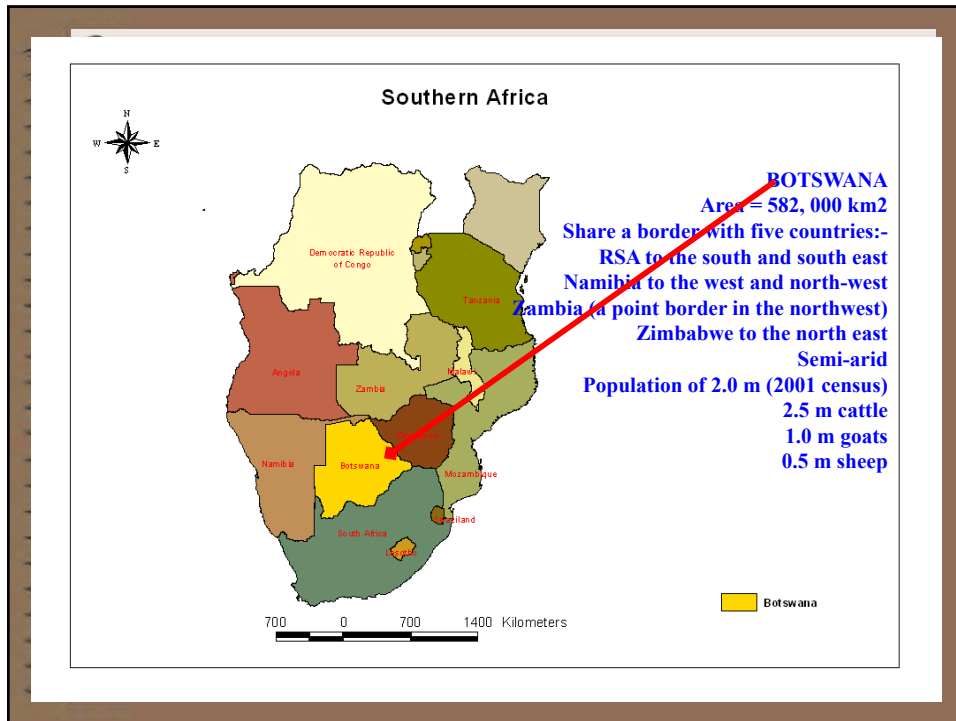
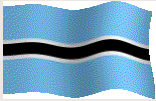
***Management of FMD diagnosis in Botswana
presented at
CBT workshop in Gaborone
06TH February 2018***

***Dr. Letlhogile Modisa
OIE delegate and Director
Department of Veterinary Services
Botswana***



SLIDE LAYOUT

- **Background Information**
- **OIE PCP pathway**
- **FMD outbreak handling**
- **FMD diagnostic laboratories**
- **Why test for FMD**
- **Why good FMD diagnosis**
- **FMD reporting protocol**
- **Conclusions**

GENERAL BACKGROUND

- **Botswana's Vision: prosperous productive and Innovative Nation**
- **Rural Development is a priority**
- **Livestock Production Underpins The rural economy**
- **Agriculture contributes 3% to the GDP (of which the livestock component is 2.6%)**
- **Access to export market Underpins Livestock production**



GENERAL BACKGROUND



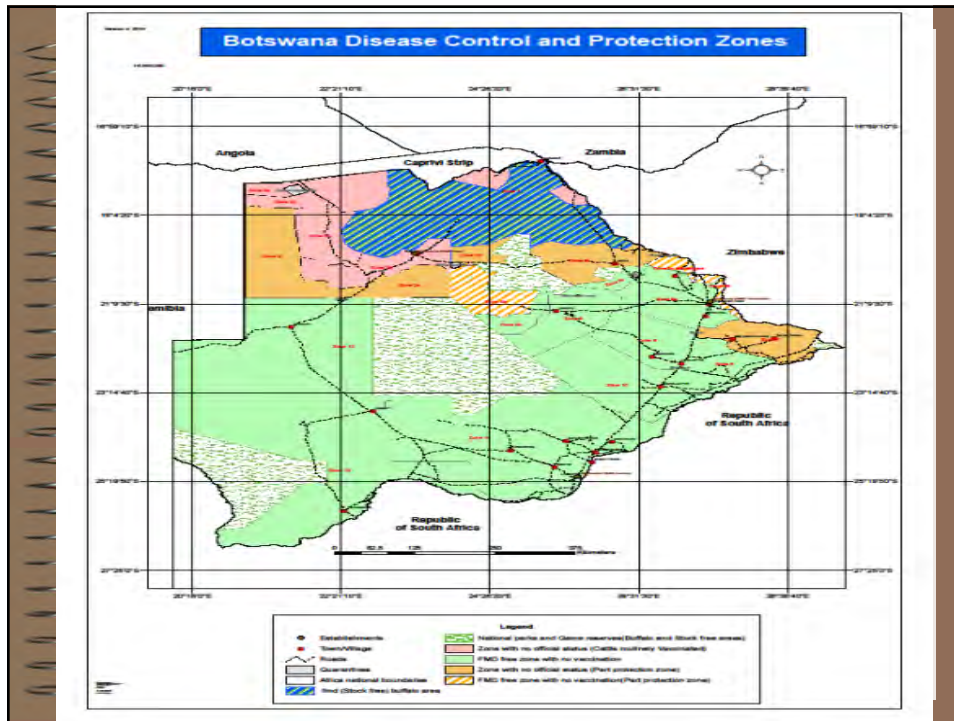
FMD Progressive control path

International FMD Control



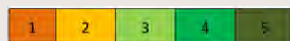
- The International Community led by animal health organisations namely FAO and OIE has embarked on an ambitious plan to control FMD
- The Progressive Control Pathway has been unanimously adopted by all countries as the guiding route for all countries





Provisional PCP-FMD Roadmap for Botswana 2017-2025

Country	2012	2013	2014	2015	2016	2017	2018	2019	2020	2021	2022	2023	2024	2025
Estimation in 2012	3	3	1	2	3	3	3	4	4	4	4	4	4	4
Estimation in 2017	3	3	3	2	3	3	3	4	4	4	4	4	4	4



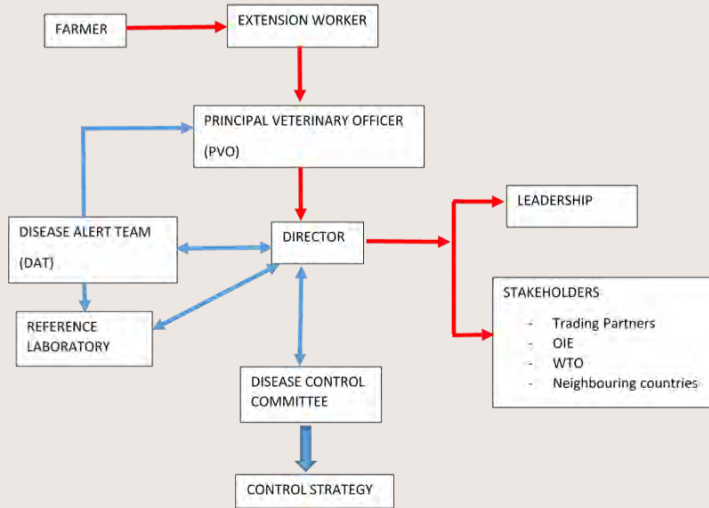
FMD OUTBREAK REPORT

- Farmer reports to extension officer
- Officer reports to PVO
- PVO reports to Director
- Director activates DAT in 24hours
- DAT attends and samples
- DAT reports to Director {also plate test}
- Director reports to MoA, OIE, WTO, trading partners, stakeholders, media

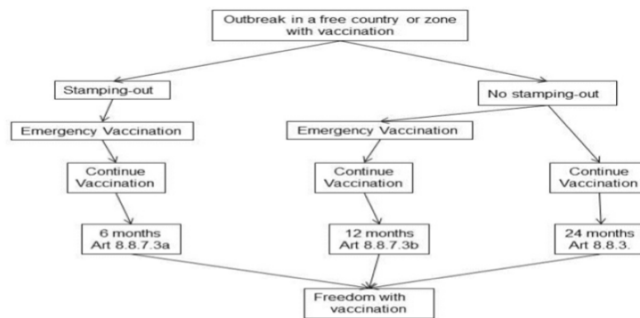
FMD OUTBREAK ctd

- Labs report results to director
- DCC meets and advise strategy
- Strategy presented to government
- Command centers set up
- OIE, trade partners, stakeholders updated
- Control strategy implemented
- Regular feedback to all

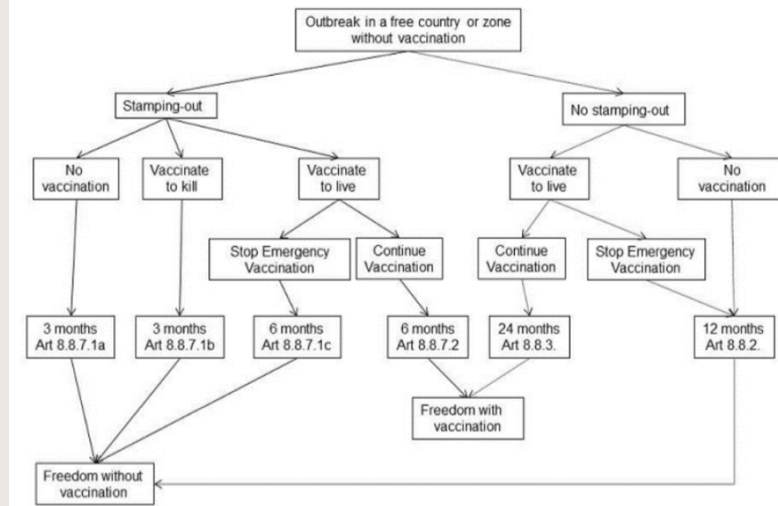
EMERGENCY DISEASE REPORTING PROTOCOL



FMD IN ENDEMIC AREA



FMD IN FREE AREA



Laboratories

- **World reference lab for FMD**
Weighbridge, UK.
- **BVI and OVI are OIE reference laboratory for Sub Saharan Africa for FMD.**
- **BNVL and other national laboratories handle non infectious materials**
- **The pen side test should be under national labs**
- **OIE requires that all should accredited to *ISO 17025***

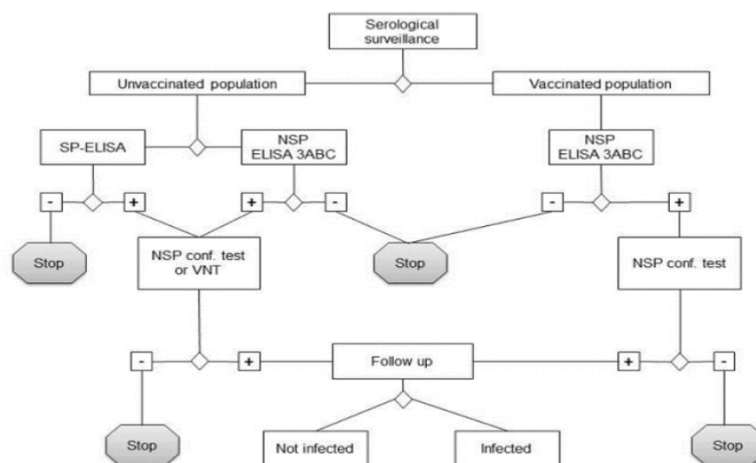
WHY TEST FOR FMD????

- To confirm or rule out clinical diagnosis
- To confirm annual free status of free zones
- Early detection and rapid response
- To determine the virus type and source
- To determine the right vaccine to use
- To determine vaccine protection
- To facilitate trade from non free countries
- To facilitate trade from non free zones
- Research and risk analysis

Why should oie approve tests???

- Uniformity of results
- Reliability of results
- Accuracy and precision
- Sensitivity and specificity
- Repeatability

FMD LAB RESULTS



Conclusions

- FMD DIAGNOSIS STILL NEEDS TO BE DONE PROMPTLY
- It should be managed to avoid confusion
- It is extremely useful in emergencies like abattoirs, loading centers, AI stations to have rapid penside tests
- It is prudent to determine how we can use CBT principles to continue trade during phase of outbreaks

A graphic of a spiral-bound notebook with a brown cover and a light beige page. The spiral binding is on the left side. The text is centered on the page.

THANK YOU

-
- ACKNOWLEDGEMENTS TO ALL